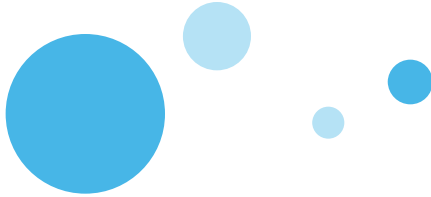


# sModule Product List



Website: <http://www.smodule.com>

Market Mail : [market@smodule.com](mailto:market@smodule.com)

Support Mail: [support@smodule.com](mailto:support@smodule.com)

Sales Phone: +86-755-29638421

# CORE4418 - Samsung S5P4418 CPU Module



CORE4418

<b>Processor</b>	Samsung S5P4418, Cortex-A9 Quad-Core, 1.6G
RAM Size	1GB DDR3 RAM(Option 2GB)
Storage	8GB eMMC Flash
Display	One TFT LCD interface One HDMI interface One VGA interface
Audio	AC97/IIC interface, support Audio Out/In
Ethernet	Support Gigabit Ethernet
USB	USB HOST 2.0, USB HSIC, USB OTG
UART	four UART interface, RTS/CTS support
Resource	Watchdog, RTC
System	Linux + Qt3.5, Android 4.4, Ubuntu 12.04
Board size	68mm x 48mm



## SBC-x4418 - Samsung S5P4418 Development kits



SBC-x4418

Processor	Samsung S5P4418, Cortex-A9 Quad-Core, 1.6G
RAM Size	1GB DDR3 RAM
Storage	8GB eMMC Flash
Display	One TFT LCD interface One HDMI interface One VGA interface
Audio	Audio Out/In
Ethernet	One Gigabit Ethernet
USB	Four USB Host and one USB OTG
UART	four UART interface, RTS/CTS support
Resource	Watchdog, RTC
System	Linux + Qt3.5, Android 4.4, Ubuntu 12.04
Board size	68mm x 48mm



# CORE6818 - Samsung S5P4418 CPU Module



**CORE6818**

<b>Processor</b>	Samsung S5P6818, Cortex-A53 eight-Core, 1.6G
RAM Size	1GB DDR3 RAM
Storage	8GB eMMC Flash
Display	One TFT LCD interface One HDMI interface One VGA interface
Audio	AC97/IIC interface, support Audio Out/In
Ethernet	Support Gigabit Ethernet
USB	USB HOST 2.0, USB HSIC, USB OTG
UART	four UART interface, RTS/CTS support
Resource	Watchdog, RTC
System	Linux + Qt3.5, Android 4.4, Ubuntu 12.04
Board size	68mm x 48mm



## SBC-x6818 - Samsung S5P6818 Development kits



SBC-x4418

Processor	Samsung S5P6818, Cortex-A53 eight-Core, 1.6G
RAM Size	1GB DDR3 RAM
Storage	8GB eMMC Flash
Display	One TFT LCD interface One HDMI interface One VGA interface
Audio	Audio Out/In
Ethernet	One Gigabit Ethernet
USB	Four USB Host and one USB OTG
UART	four UART interface, RTS/CTS support
Resource	Watchdog, RTC
System	Linux + Qt3.5, Android 4.4, Ubuntu 12.04
Board size	68mm x 48mm



# iBOX4418 - Samsung S5P4418 Card Size Board



**iBOX4418**

<b>Processor</b>	<b>Samsung S5P4418, Cortex-A9 Quad-Core, 1.6G</b>
RAM Size	1GB DDR3 RAM
Storage	8GB eMMC Flash
Display	One TFT LCD/LVDS interface One HDMI interface One VGA interface
Audio	AC97/IIC interface, support Audio Out/In
Ethernet	Support Gigabit Ethernet
USB	2 x USB 2.0 host Type-A; 1 x USB OTG
UART	four UART interface, RTS/CTS support
Resource	Watchdog, RTC
System	Linux +Qt3.5, Android 4.4, Ubuntu 12.04
Board size	100mm x 68mm



# iBOX6818 - Samsung S5P6818 Card Size Board






**iBOX6818**

<b>Processor</b>	<b>Samsung S5P6818, Cortex-A53 eight-Core, 1.6G</b>
RAM Size	2GB DDR3 RAM
Storage	8GB eMMC Flash
Display	One TFT LCD/LVDS interface One HDMI interface One VGA interface
Audio	AC97/IIC interface, support Audio Out/In
Ethernet	Support Gigabit Ethernet
USB	2 x USB 2.0 host Type-A; 1 x USB OTG
UART	four UART interface, RTS/CTS support
Resource	Watchdog, RTC
System	Linux +Qt3.5, Android 4.4, Ubuntu 12.04
Board size	100mm x 68mm






# Realtek RTL8188CUS USB Wlan Module

Wlan Board	sWiFi-R8188CU1	sWiFi-R8188CU2	sWiFi-R8188CU3
Picture			
Chipset	Use Realtek RTL8188CUS chips		
Standards	IEEE 802.11n/b/g Standards		
Data Rate	up to 150Mbps		
Interface type	USB2.0 Interface		
Antenna	Expand antenna Support		
Working Voltage	DC 3.3V	DC 3.3V or 5V	DC 3.3V
Dimensions	13 x 12.3 x 1.6 mm	27 x 12 x 2 mm	25 x 12 x 2.3 mm



# MTK MT7601UN USB Wlan Module

Wlan Board	sWiFi-R7601MU2	sWiFi-R7601MU5	sWiFi-R7601MU6
Picture			
Chipset	Use MTK MT7601UN chips		
Standards	IEEE 802.11n/b/g Standards		
Data Rate	up to 150Mbps		
Interface type	USB2.0 Interface		
Antenna	Expand antenna Support		
Working Voltage	DC 3.3V	DC 3.3V	DC 3.3V
Dimensions	13 x 12.3 x 1.6 mm	20.3 x 14 x 8.7 mm	15.7 x 13 x 1.6 mm

